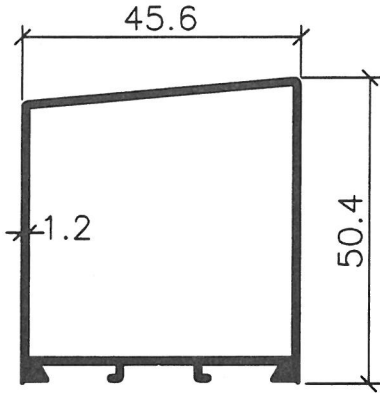
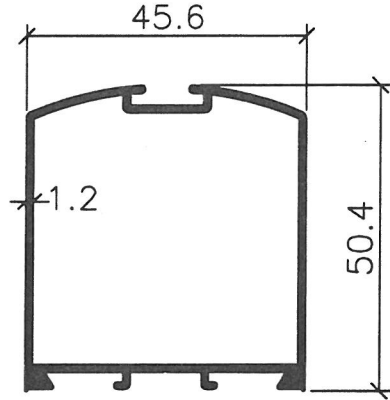


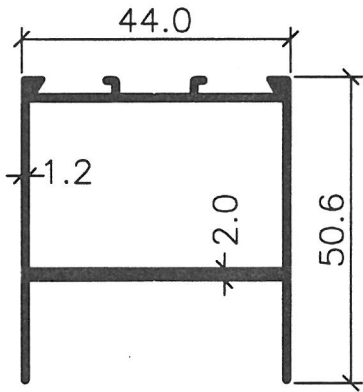
SWING DOOR



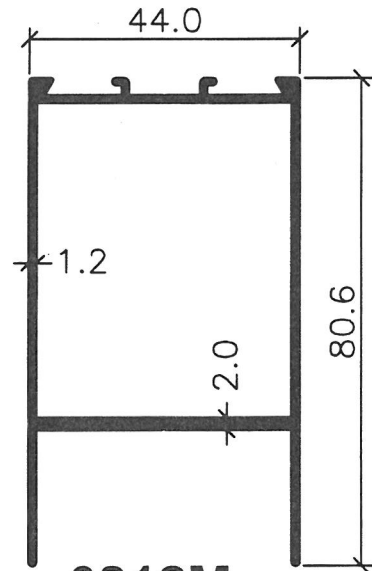
0814M



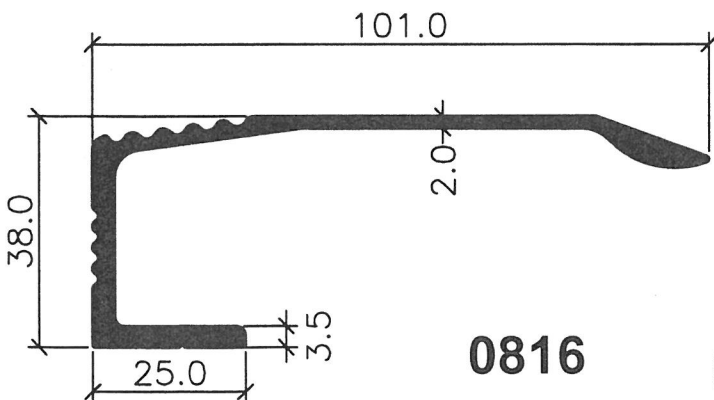
0813M



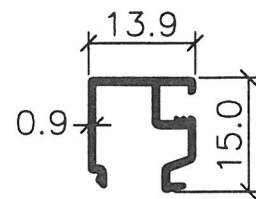
0811M



0812M



0816



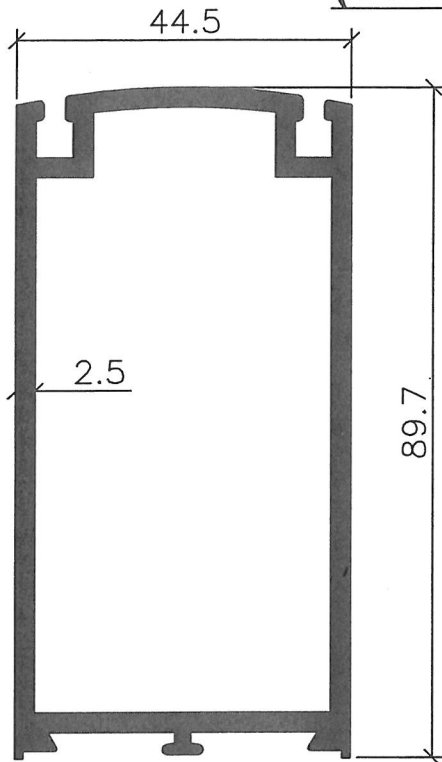
0815M

NOTE:

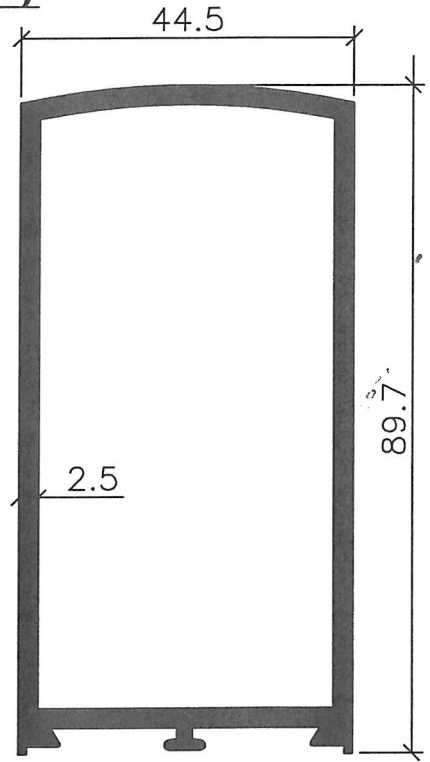
- THE DRAWINGS ARE NOT TO SCALE
- ALL DIMENSION ARE SHOWN IN MM, OTHERWISE WOULD BE STATED
- DRAWING AS UPDATED ON 26.08.08



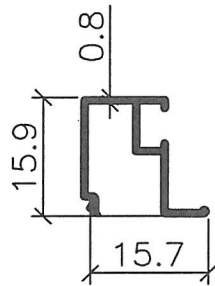
**SWING DOOR
 (THICKNESS 2.5mm)**



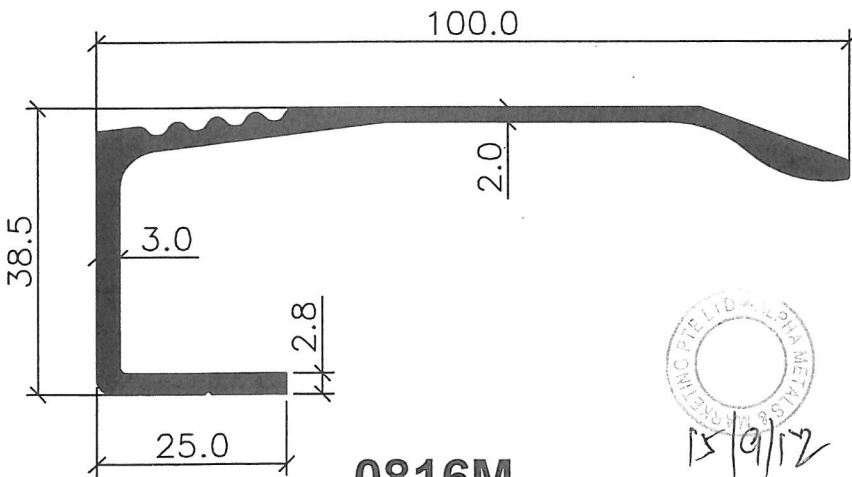
0824



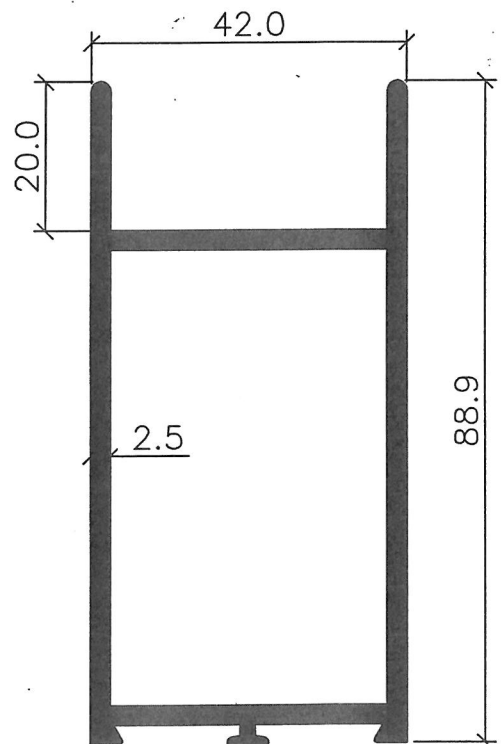
0825



0826



0816M

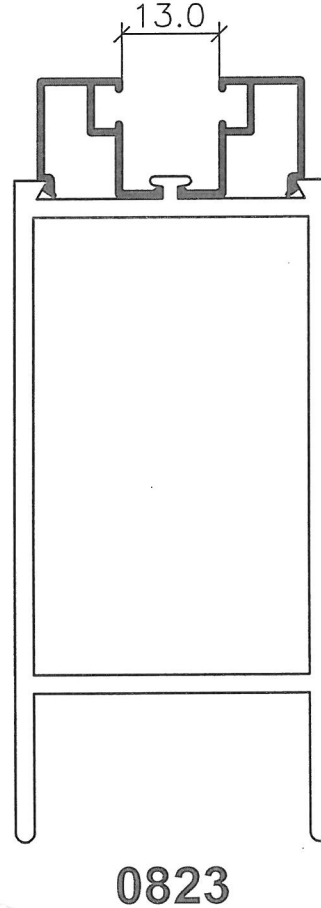
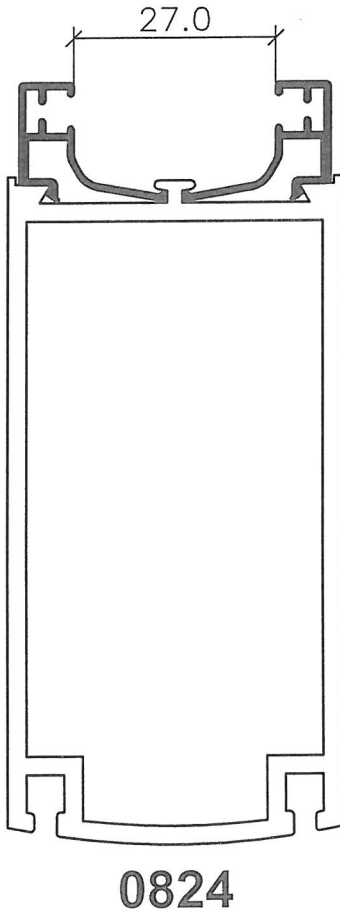
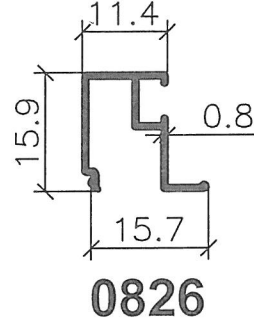
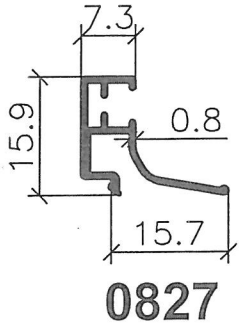


0823



NOTE:
 - THE DRAWINGS ARE NOT TO SCALE
 - ALL DIMENSION ARE SHOWN IN MM, OTHERWISE WOULD BE STATED
 - DRAWING AS UPDATED ON 14.09.12

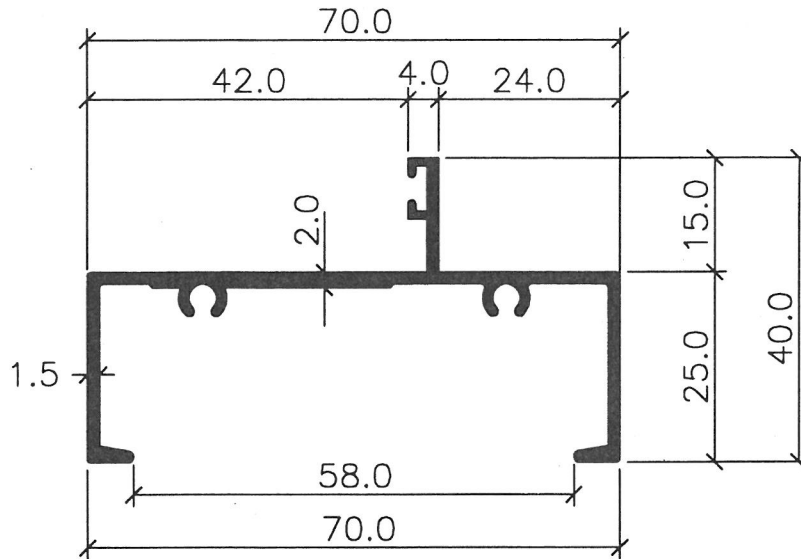
**SWING DOOR
(THICKNESS 2.5mm)**



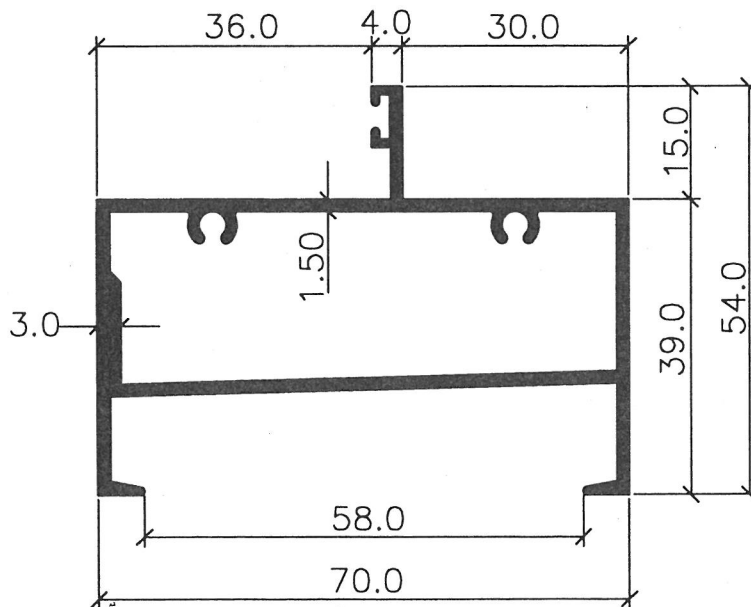
NOTE:
- THE DRAWINGS ARE NOT TO SCALE
- ALL DIMENSION ARE SHOWN IN MM, OTHERWISE WOULD BE STATED
- DRAWING AS UPDATED ON 03.09.14

12/9/14

MISCELLANEOUS - SWING DOOR OUTER



2147



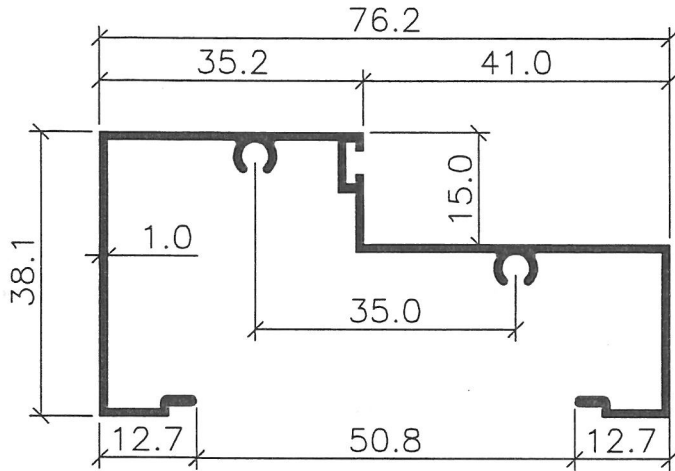
2148



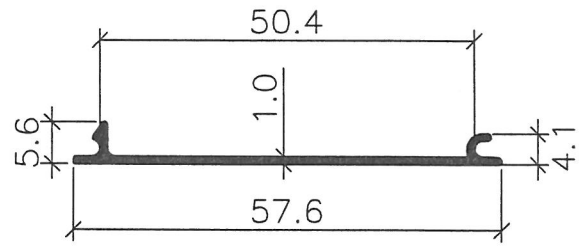
13/11/07

NOTE:
 - THE DRAWINGS ARE NOT TO SCALE
 - ALL DIMENSION ARE SHOWN IN MM, OTHERWISE WOULD BE STATED
 - DRAWING AS PER UPDATED ON 31.10.07

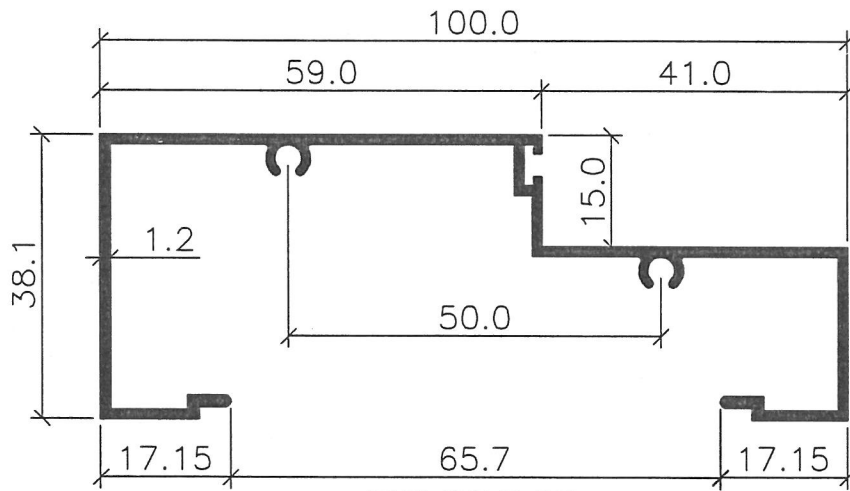
MISCELLANEOUS-SWING DOOR OUTER



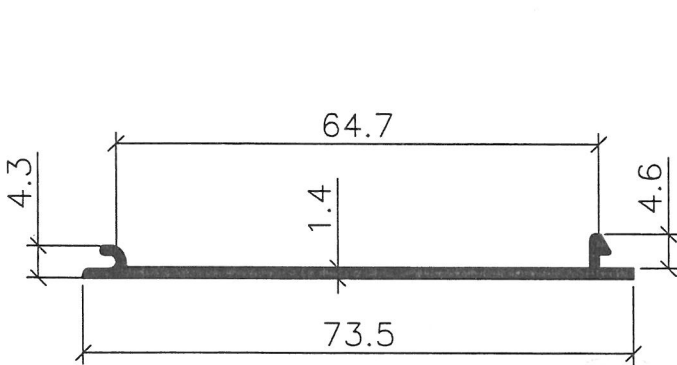
ED02435.



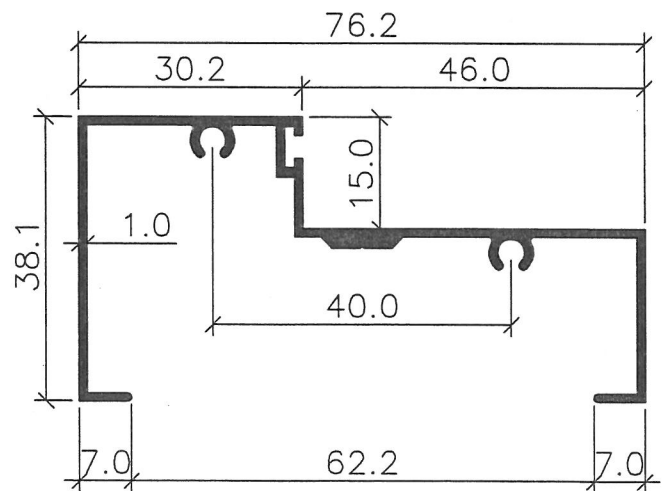
ED01099.



ED02642.



2170



ED00924.

NOTE:
 - THE DRAWINGS ARE NOT TO SCALE
 - ALL DIMENSION ARE SHOWN IN MM, OTHERWISE WOULD BE STATED
 - DRAWING AS UPDATED ON 02.01.13

3/1/13