

*“Solutions within Reach”*

We provide consultancy services as well as design, engineering and manufacturing on a wide range of architectural hardware and extrusion products.

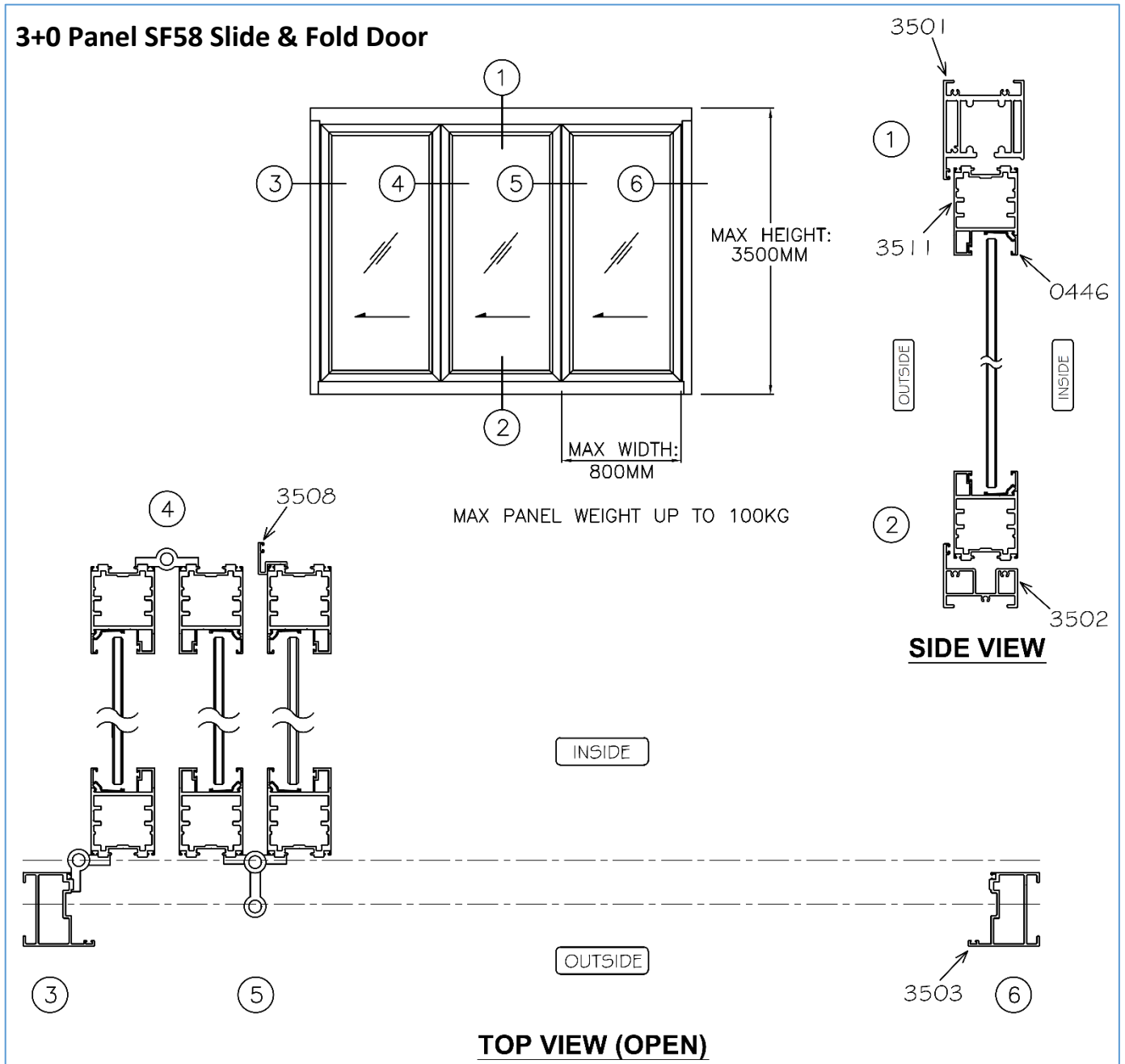
**SLIDE & FOLD DOOR (SERIES SF58)**



## “Solutions within Reach”

### Slide & Fold Door (Series SF58)

#### Typical Assembly Details

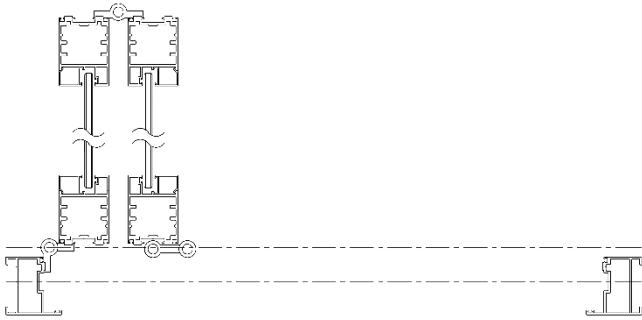


## “Solutions within Reach”

### Slide & Fold Door (Series SF58)

#### SF58 Slide & Fold Panel Configurations

##### 2+0 Panel SF58 Slide & Fold Door



##### 2+2 Panel SF58 Slide & Fold Door



##### 3+1 Panel SF58 Slide & Fold Door



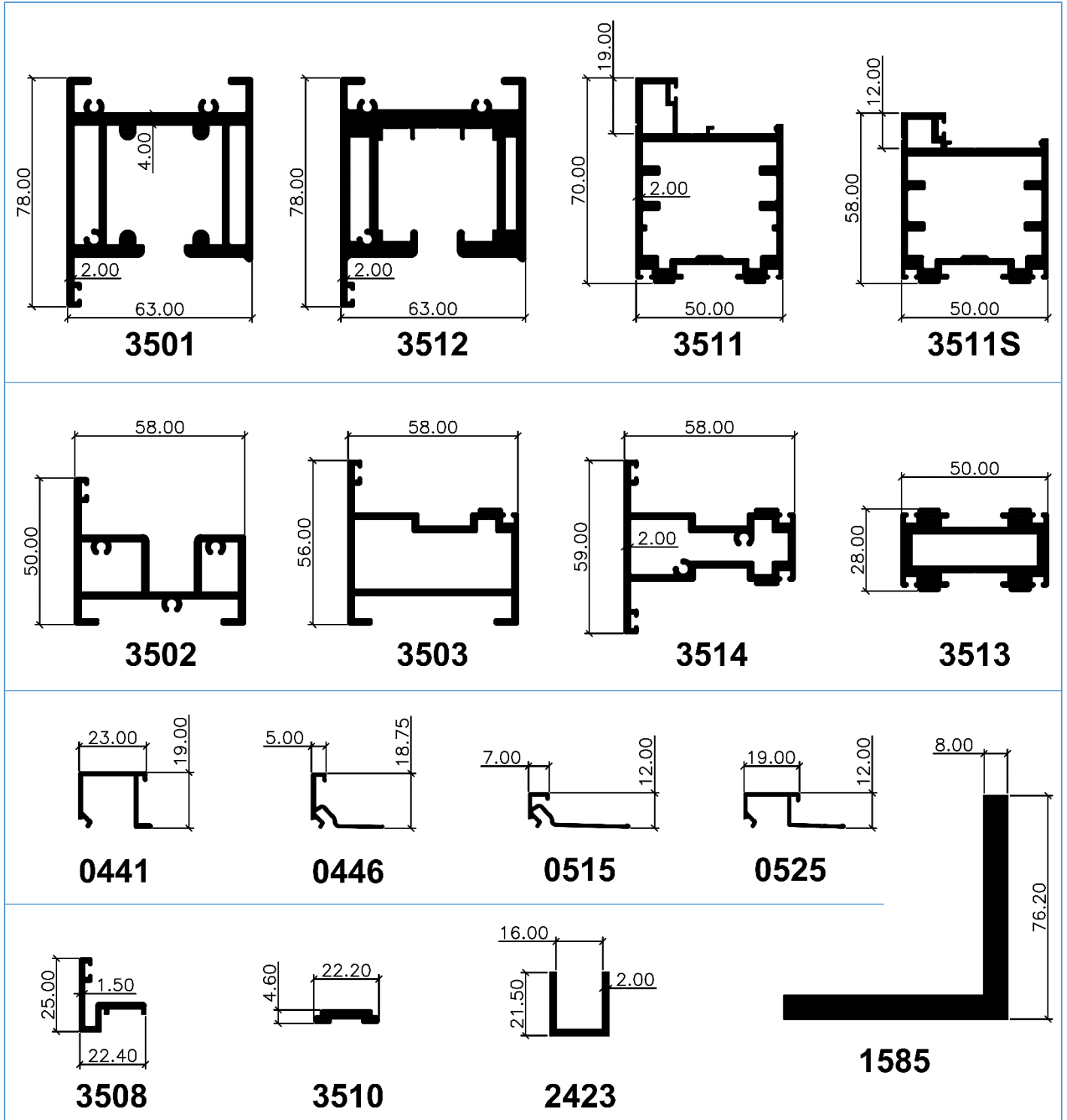
##### 5+0 Panel SF58 Slide & Fold Door



“Solutions within Reach”

**Slide & Fold Door**  
**(Series SF58)**

**Sectional Details**

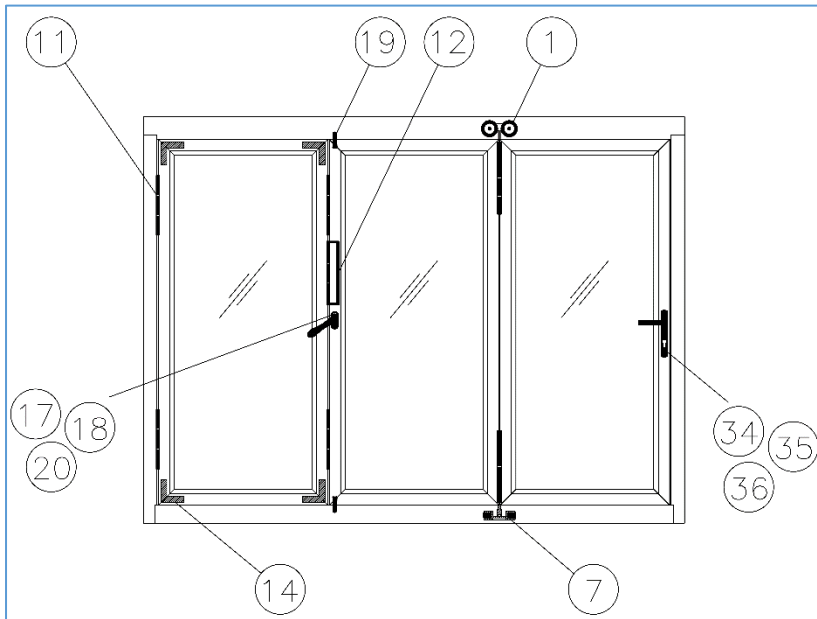


## “Solutions within Reach”

### Slide & Fold Door

#### (Series SF58)

#### SF58 Slide & Fold Door Hardware Fittings



1) 7160-HSS



2) 7167-HSS



3) 7195



4) 7169



5) 7170



6) 7196



7) 7161-HSS



8) 7168-HSS



9) 7197



10) 7164-4L



11) 7165-3L



12) 7163



13) 7166



14) 5046-335



15) 5227



16) 5224



17) 5225



18) 5226A/B

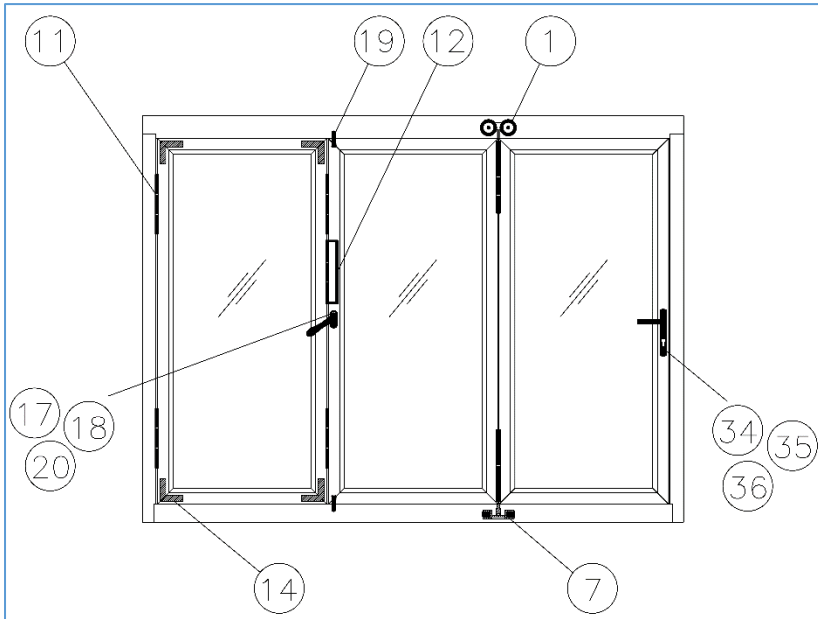


19) 4462

## “Solutions within Reach”

### Slide & Fold Door (Series SF58)

#### SF58 Slide & Fold Door Hardware Fittings



20) 7175M



21) 7199



22) 7198-6"/14"



23) 7186-T14



24) 7186-B16



25) 7182



26) 7183-CL25



27) 7183



28) 7181



29) 7189



30) 7190KA



31) 7187



32) 7188KA



33) 7176HS-W26



34) 7177HS-W26



35) 4527TLM-30MM



36) 4528E-SC02-SNS



# Product Features

1. Multimedia display window or glass panel with intelligent materials: User can switch arbitrarily between multimedia creative materials, transparent display windows, and TV screen modes.
2. The glass combined with “Smart Film” is no longer a simple glass, but a new material of intelligence, green energy, privacy control, display application, security, and energy saving in real life.
3. Safety and security operate off of ordinary AC Voltage (220VAC/110VAC), require very little power (<5 watts per square meter).
4. The Smart Film is being laminated onto glass uses a low-voltage electrical current to arrange liquid crystal molecules into pattern that makes glass transparent when power on. When power off, the liquid crystal molecules revert to a random pattern, diffusing the light and causing the glass to becoming opaque.
5. Green building with energy saving materials: Can effectively reject up-to-70% of the total solar energy in the opaque state to save energy when transmitting light but not heat.

## SMART GLASS TECHNICAL SPECIFICATIONS

Visible Light Transmittance	ON ≥ 88% OFF ≤ 50%
Haze	ON ≤ 6% OFF ≥ 90%
UV Blocking	OFF ≥ 98%
Sound Insulation	≥ 35dB
Power Consumption	ON <5w/m <sup>2</sup> OFF 0w/m <sup>2</sup>
Heat Resistance	ON ~ 20% OFF ~ 38%
Life-span (ON Mode)	>100,000 Hours



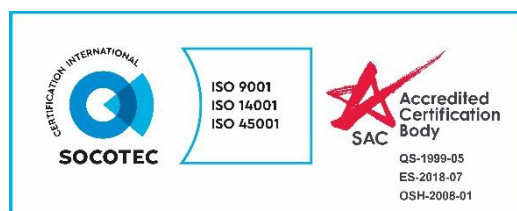
## Folding Smart Glass Door

Specification	Frame	Glass
<b>Material</b>	Aluminium	Laminated Smart Glass
<b>Colour</b>	White/Dark Grey	Milky White
<b>Size</b>	2400mm (W) x 2400mm (H)	500mm (W) x 2150mm (H) x 4
<b>Thickness</b>	87mm	10mm





**SINCE 1978**



**HQ Office:**

12 Joo Koon Crescent,

Singapore 629013

Tel: 6745 0204

Fax: 6748 1741

Email: [sales@alphametals.com.sg](mailto:sales@alphametals.com.sg)

<http://www.alphametals.com.sg>

**Branch:**

Block 4023 #01-343/345/347,

Ang Mo Kio Ind. Park 1 Singapore 569634

Tel: 6455 5576

Fax: 6455 5587